

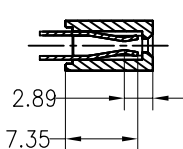
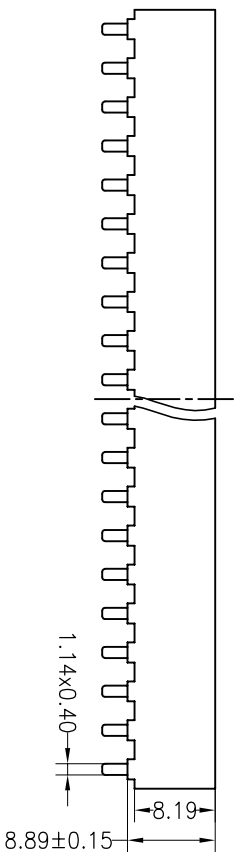
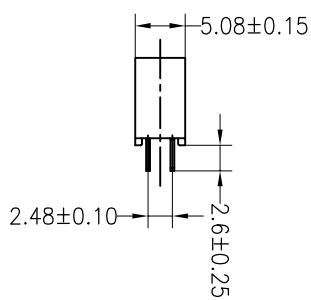
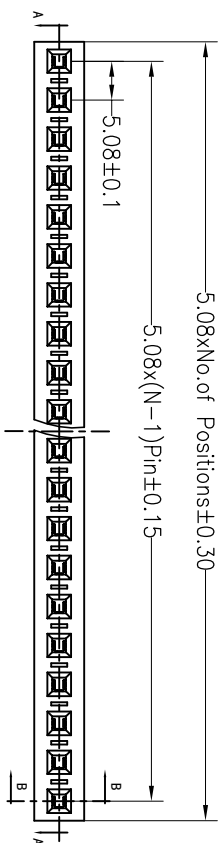
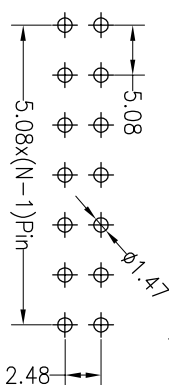
HSE ROHS

SPECIFICATIONS

Rated Current: 7.0AMP
 Contact Resistance: 20mΩ Max
 Withstand Voltage: 1000V AC/DC
 Insulation Resistance: 1000MΩ Min
 Operation Temperature: -40°C to +105°C

Contact Material: Brass
 Contact Plating: Au or Sn Over Ni
 Insulator Material: Polyester (UL94V-0)
 Standard: LCP
 Max. Processing Temp: 230°C for 30-60 seconds
 (260°C for 10 seconds)

Recommended P.C.B Layout (Top Side)
 (PCB BOARD TOLERANCE ±0.05)



Ordering Information

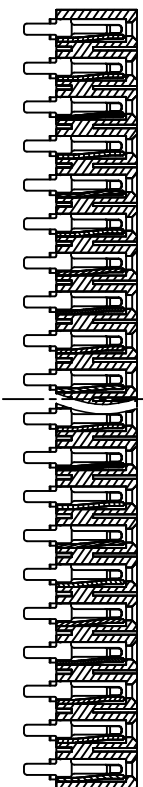
2189 01 XX F N XX S UX 01

No. of Pins Per Row: 1*2~1*20

Insulator Material Option:
 A=BK-PBT
 B=BK-PA66
 C=BK-PA6T
 D=BK-PA46
 E=BK-PA9T
 F=BK-LCP

Contact Plating:
 GO: Gold Flash
 SO: Gold Flash/Tin
 SN: Tin
 SM: Matte-Tin

Packing:
 O=PE Bag
 A=Tray
 T=Tube



SESTI.PN: A-A

REV	DATE	MODIFICATION DESCRIPTION	CHANGE	OPERATION		DRAW	Y.YuSheng	12.09.21	SCALE	FIT	BESTCONN(WUHAN) TECHNOLOGY CO.,LTD
				DIM	TOL						
A0	2012.09.21	NEW DRAWING		X.XX	±0.30	CHECK		A4	1/1	PART NO. 218901XXFNXXSUX01	
				X.XX	±0.20					TITLE: 5.08PF H8.89mm 1xNpin 180°	
				X.XXX	±0.10	APPROVE					
				Angle	±3°						

<https://bscconnector.com/>