

SPECIFICATIONS

Rated (额定参数): 300V, 10A
 Dielectric strength (抗电强度): AC1250V/1 Minute
 Insulation Resistance (绝缘电阻): 1000MΩ Min
 Contact Resistance (接触电阻): 20mΩ Max
 Screw Torque (扭矩): 0.2Nm (1.77Lb.in)
 Wire Range (线径): 26~16AWG
 Strip length (剥线长度): 4~5mm
 Temp. range (操作温度): -40°C~+105°C
 MAX Soldering (瞬时温度): +250°C, 5s

Housing Material (塑件): PA66 (UL94 V-0)
 Contact (端子): Brass, Tin plating (黄铜镀锡)
 Wire protector (弹片): Brass (黄铜), Ni plating (镀镍)
 Screw (螺丝): M2.0, Steel, Zinc plating (钢, 镀锌)

PITCH RANGE IN MM	NOMINAL DIMENSION RANGE IN MM						
	OVER 6	OVER 10	OVER TO 24	OVER 30	OVER TO 60	OVER TO 100	OVER TO 150
±0.10	±0.15	±0.25	±0.30	±0.30	±0.50	±0.70	±1.00

Ordering Information

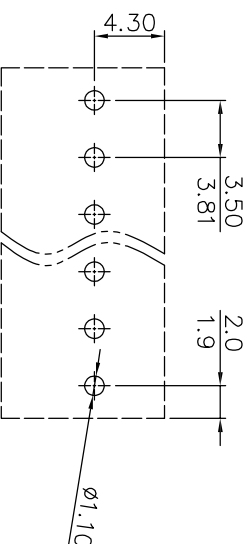
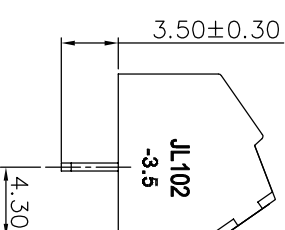
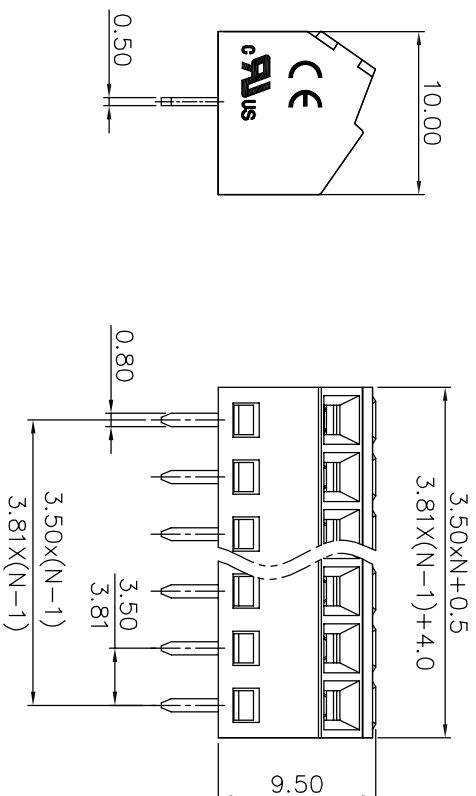
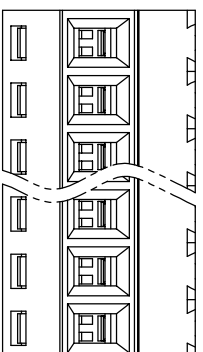
JL 102 - XXX XX X X 1

Pitch
350=3.5PH
381=3.81PH

No. of pins
2P, 3P, 4P~18P

Housing Color
B=Black
G=Green
U=Blue
R=Red
W=White
Y=Yellow
O=Orange
E=Grey

Packing
O=Pe bog
T=Tube
A=Troy



Recommended P.C.B Layout(Top Side)

REV	DATE	MODIFICATION DESCRIPTION	CHANGE	OPERATION		DRAW	yiyusheng	20.03.30	SCALE	FIT	BESTCONN(WUHAN) TECHNOLOGY CO.,LTD	
				Angle	±3'						APPROVE	TITLE:
A0	2020.03.30	NEW DRAWING		X:XX	±	CHECK			mm	A4	1/1	JL102-XXXXXXXX1
1												3.5/3.81mm Terminal Blocks Female