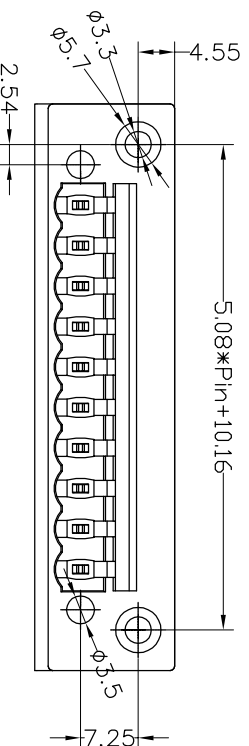


SPECIFICATIONS

Rated(额定参数): 300V,1.5A
 Dielectric strength(抗电强度): AC2000V/1 Minute
 Insulation Resistance(绝缘电阻):1000MΩ Min
 Contact Resistance(接触电阻):20mΩ Max
 Temp. range(操作温度): -40℃~+105℃
 MAX Soldering(瞬时温度):+250℃,5s

Housing Material(塑件): PA66 (UL94 V-0)
 Contact(端子): Brass, Tin plating(黄铜镀锡)



PITCH RANGE IN MM		NOMINAL DIMENSION RANGE IN MM					
TO	OVER	TO	OVER	TO	OVER	TO	OVER
6	10	10	30	60	100	150	150
10	24	30	60	100	150	150	150
±0.10	±0.15	±0.25	±0.30	±0.30	±0.50	±0.70	±1.00

Ordering Information

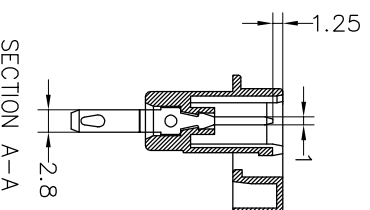
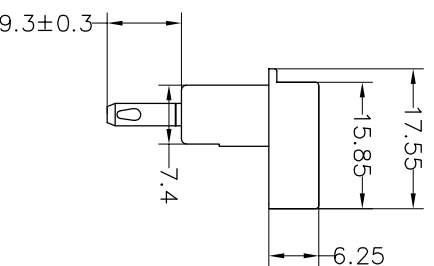
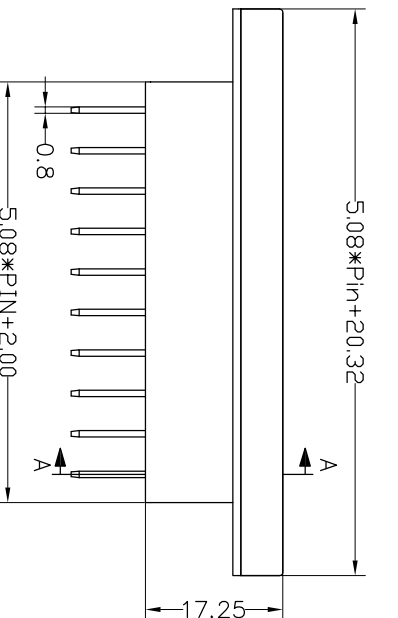
JL2EDGB-508 XX G X 1

Pitch
 500=5.00PH
 508=5.08PH

No.of pins
 2P~24P

Housing Color
 B=Black
 G=Green
 U=Blue
 R=Red
 W=White
 Y=Yellow
 O=Orange
 E=Grey

Packing
 O=Pe bag
 A=Troy
 T=Tube



OPERATION		DRAW		BEN		17.06.05		SCALE		FIT		BESTCONN(WUHAN) TECHNOLOGY CO.,LTD	
XX	±0.30							mm	A4	1/1		https://bsconnector.com/	
X:XX	±0.20	CHECK						SIZE	A4	SHEET	1/1	PART NO.	JL2EDGB-508XXGX1
X:XXX	±0.10							ANGLE	±3°	APPROVE		TITLE:	5.08mm Pitch Male Pluggable Terminal Blocks
REV	DATE	MODIFICATION DESCRIPTION		CHANGE		DIM		TOL		PROU.			
1	2017.06.05	NEW DRAWING		CHANGE									