



FILE NO: 5383910

SPECIFICATIONS

Rated Current: 1.0AMP
 Contact Resistance: 20mΩ Max
 Withstand Voltage: 500V AC/DC
 Insulation Resistance: 1000MΩ Min
 Operation Temperature: -40°C to +105°C

Contact Material: Brass
 Contact Plating: Au or Sn Over Ni

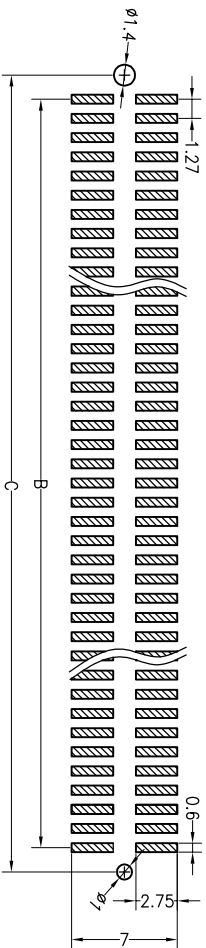
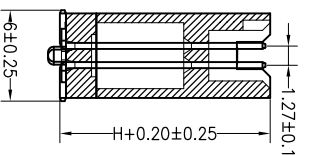
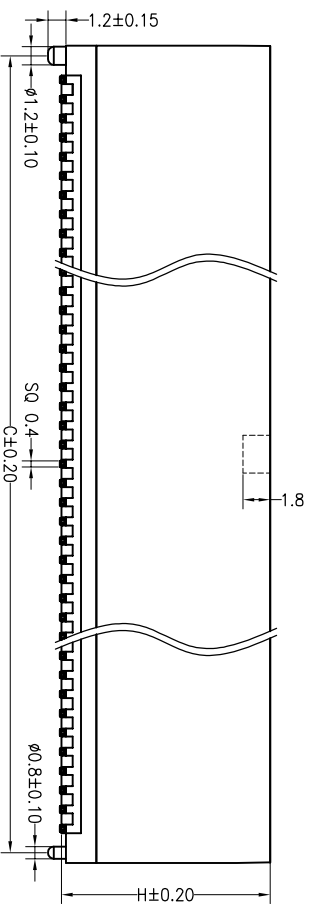
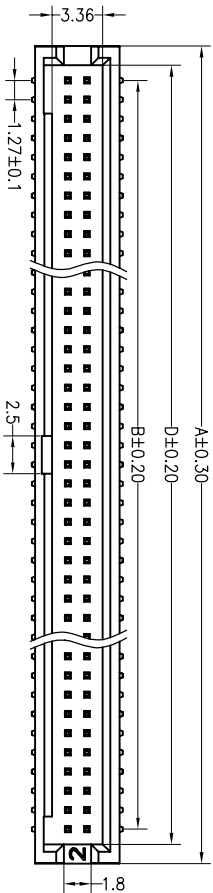
Insulator Material: Polyester (UL94V-0)

Standard: PA6T

Max. Processing Temp: 230°C for 30-60 seconds
 (260°C for 10 seconds)

PIN 数表

NO	A	B	C	D
80P (H13.8)	54.08	49.53	52.72	51.54
44P (H17.8)	31.22	26.67	29.86	28.68
40P (H17.8)	28.68	24.13	27.32	26.14
20P (H10.0/17.8)	15.98	11.43	14.62	13.44



Recommended P.C.B Layout (Top Side)
 (PCB BOARD TOLERANCE±0.05)

Ordering Information

3235 XX M XX X B K00 X 01

- No. of Pins: 20---80P
- Contact Plating Option: G1:Gold Flash, G2:1.5U" Gold, G3:2U" Gold, G4:3U" Gold, G5:5U" Gold, S0:Gold Flush/Tin, SN:tin
- Insulator Material Option: A=BK-PBT, B=BK-PA66, C=BK-PA6T, D=BK-PA46, E=BK-PA9T, F=BK-LCP
- Packing Option: O=PE Bog, A=Troy, T=Tube

REV	DATE	MODIFICATION DESCRIPTION	CHANGE	OPERATION		DRAW	WZG	16.01.09	SCALE		FIT	BESTCONN(WUHAN) TECHNOLOGY CO.,LTD	
				DIM	TOL				UNIT	mm		https://bsconnector.com/	
A0	2016.01.09	NEW DRAWING		X.XX	±0.30	CHECK			A4	1/1		PART NO. 3235XXXXXXBK00X01	
1				Angle	±3°	APPROVE						TITLE: 1.27DC3-NPIN #SMT	