

### Technical Data

Insulator:Black glass filled polyester PPS or PBT

Flammability:UL 94V-0

Sleeve:Brass

Contact clip(4 fingers):Beryllium copper

Mating pin:ø0.35 to ø0.5mm

Forces:(polished steel gauge ø0.41)

Mechanical life:min 500 cycles

Current rating:3Amps/Contact max

Contact resistance:max 10mΩ

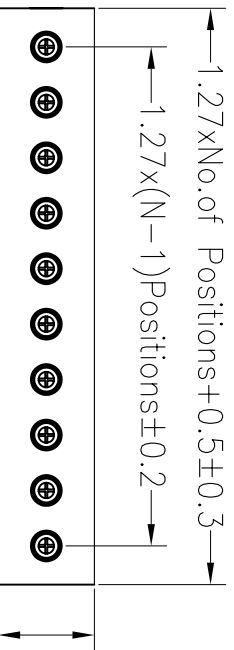
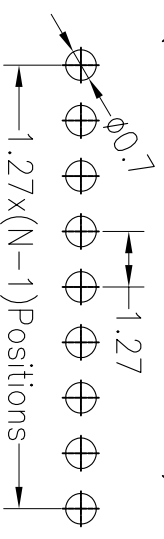
Dielectric strength:min 1000V/RMS

Operating temperature:-40°Cto+105°C

Soldering temperature:+245°C±5°C, 5s max

1 2 3 4 5 6 7 8 9

Recommended P.C.B Layout(Top Side)  
(PCB BOARD TOLERANCE±0.05)



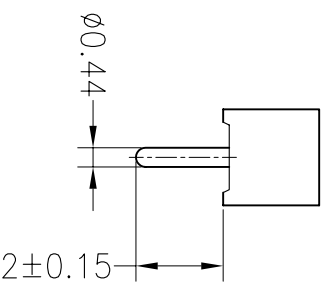
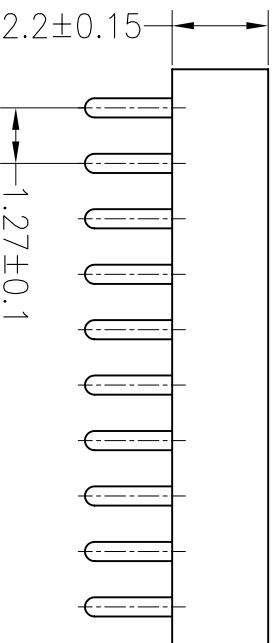
2.2±0.15

### Ordering Information

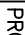
3624 22 1 XX S XX XXX 01

Insulator Type No.of Pins  
Code 1x40Pins  
1:Single row 2x40Pins  
2:Double row

Contact Plating Pin Length  
SN:Tin 042=4.20mm  
G0:Gold Flash  
G2:2U"Gold  
G3:3U"Gold  
G4:5U"Gold  
G5:10U"Gold  
S0:Gold Flash/Tin  
Standard:G0



B

REV	DATE	MODIFICATION DESCRIPTION	CHANGE	OPERATION		DRAW	YTYuSheng	12.03.28	SCALE		FIT	BESTCONN(WUHAN) TECHNOLOGY CO.,LTD <a href="https://bsconnector.com/">https://bsconnector.com/</a>	
				X.X	±0.30				UNIT	mm			
A0	2012.03.28	NEW DRAWING		X.XX	±0.20	CHECK			SIZE	A4		PART NO.	3624221XXSXX04201
				X.XXX	±0.10				SHEET	1/1		TITLE:	1.27x2.2 Machine Female Header 180° L=4.20
				Angle	±3°	APPROVE			PROJ.				
				DIM	TOL								

A