

HSE ROHS

SPECIFICATIONS PERFORMANCE

Electrical Rating: AC/DC 50V 0.5A
 Insulation Resistance: 500MΩ
 Contact Resistance: 50mΩ Max
 Withstand Volt: 150V AC/minute
 Operating Temperature: -40°C to +105°C

Material
 Contact: Phosphor Bronze Gold-Plated
 Housing: PA46

Mox. Processing Temp: 230°C for 30-60 seconds
 (260°C for 10 seconds)

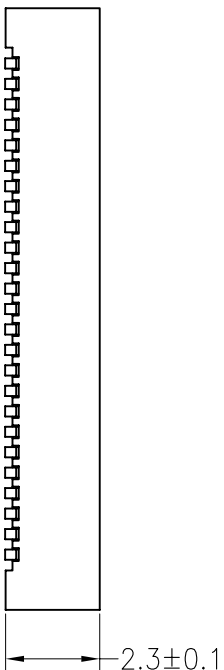
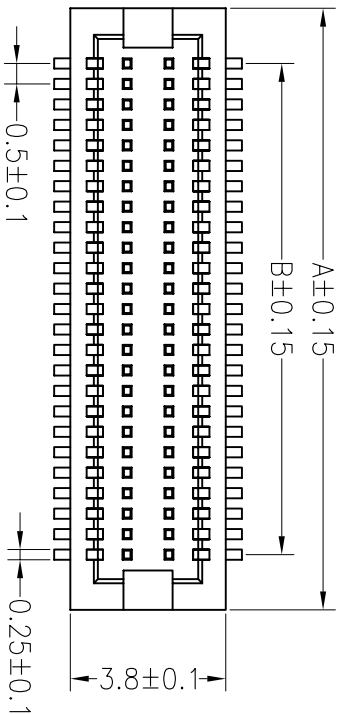
NO. OF Contacts	Dimensions	
	A	B
20pin	7.20	4.50
30pin	9.70	7.00
32pin	10.20	7.50
36pin	11.20	8.50
40pin	12.20	9.50
50pin	14.70	12.00
60pin	17.20	14.50
80pin	22.20	19.50
100pin	27.20	24.50

Ordering Information

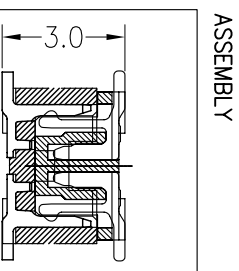
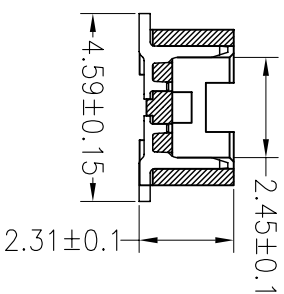
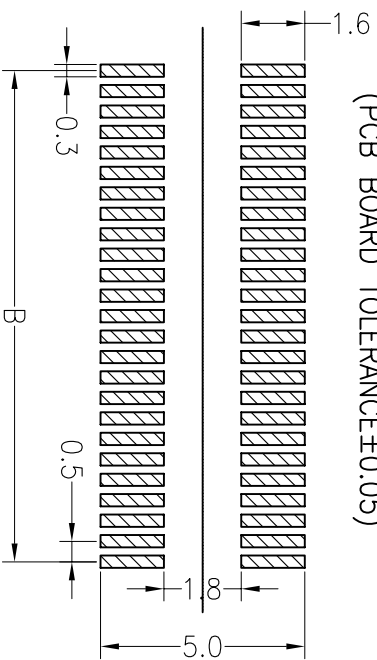
3720 F XXX 023 XX X X 01

F=Female
 M=Male
 No. of pins 20~100P
 Plastic Height 023=2.3mm
 Contact Plating 60:Gold Flash
 G1:3U" Gold
 G2:5U" Gold
 G3:10U" Gold
 G4:15U" Gold
 G5:30U" Gold
 S0:sold Flash/Tin

Insulator Material Option
 C=BK-PA46
 D=BK-PA46
 F=BK-LCP
 Packing T=Tube
 R=Reel



Recommended P.C.B Layout (Top Side)
 (PCB BOARD TOLERANCE±0.05)



OPERATION		DRAW		SCALE		FIT		TITLE:	
				UNIT	FT	PROJ.		PART NO.	
X.X	±0.30	BEN	12.03.28	mm	A4	1/1		3720FXXX023XXX01	
X.XX	±0.20	CHECK							
X.XXX	±0.10	APPROVE							
Angle	±3°								
DIM	TOL								
CHANGE									
MODIFICATION DESCRIPTION									
DATE									
REV									
A0	2012.03.28	NEW DRAWING							

BESTCONN(WUHAN) TECHNOLOGY CO., LTD
<https://bsconnector.com/>

0.5BTB NPin H2.3 Female