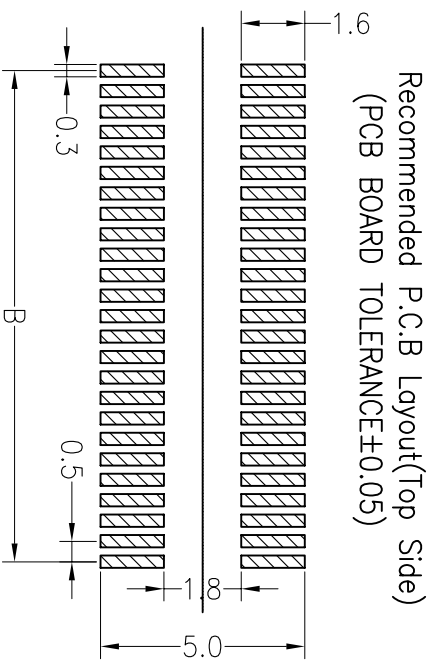
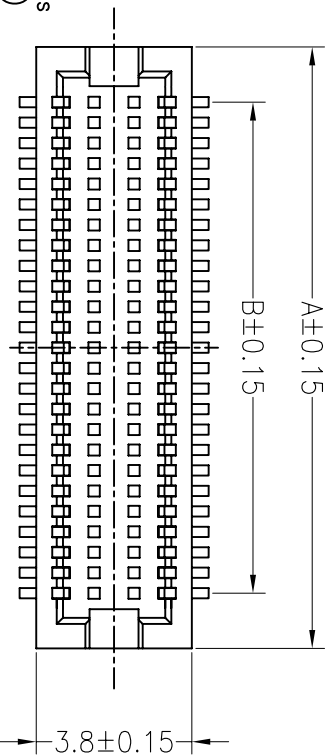


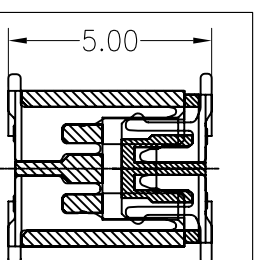
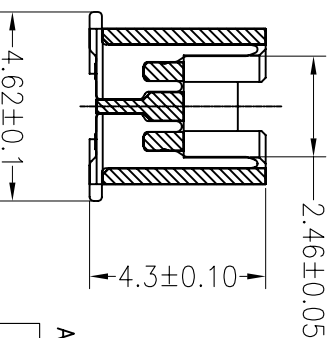
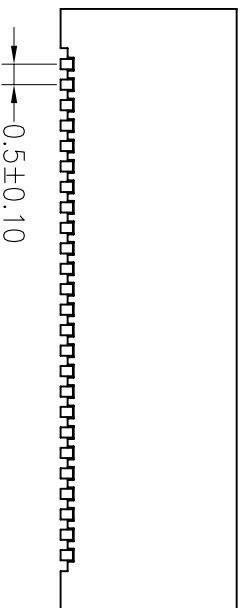
HSE ROHS

SPECIFICATIONS PERFORMANCE

Electrical Rating: AC/DC 50V 0.5A
 Insulation Resistance: 500MΩ
 Contact Resistance: 50mΩ Max
 Withstand Volt: 150V AC/minute
 Operating Temperature: -40°C to +105°C
 Material
 Contact: Phosphor Bronze Gold-Plated
 Housing: PA46
 Max. Processing Temp: 230°C for 30-60 seconds
 (260°C for 10 seconds)



NO. OF Contacts	Dimensions	
	A	B
20pin	7.20	4.50
30pin	9.70	7.00
32pin	10.20	7.50
36pin	11.20	8.50
40pin	12.20	9.50
50pin	14.70	12.00
60pin	17.20	14.50
80pin	22.20	19.50
100pin	27.20	24.50



Ordering Information

3720 F XXX 043 XX X X 01

F=Female M=Male
 No. of pins 20~100P
 Plastic Height 043=4.3mm
 Contact Plating
 00:Gold Flash
 01:3U" Gold
 02:5U" Gold
 03:10U" Gold
 04:15U" Gold
 05:30U" Gold
 S0:Gold Flash/Tin
 Insulator Option
 C=CR-P446
 P=SR-LD7
 Packing
 T=Tube
 R=Reel

OPERATION		DRAW		SCALE		FIT		TITLE	
OPERATION	UNIT	SCALE	UNIT	SCALE	UNIT	SCALE	UNIT	SCALE	UNIT
X.X	±0.30	DRAW	BEN	12.03.28	mm	A4	1/1	BESTCONN(WUHAN) TECHNOLOGY CO.,LTD	3720FXXX043XXFX01
X.XX	±0.20	CHECK						https://bsconnector.com/	
X.XXX	±0.10								
Angle	±3°	APPROVE							
DIM	TOL								
REV	DATE	MODIFICATION DESCRIPTION	CHANGE						
A0	2012.03.28	NEW DRAWING							
1									

0.5BTB NPin H4.3 Female

PART NO. 3720FXXX043XXFX01

<https://bsconnector.com/>

BESTCONN(WUHAN) TECHNOLOGY CO.,LTD