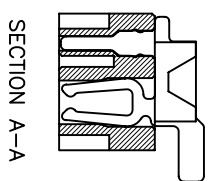
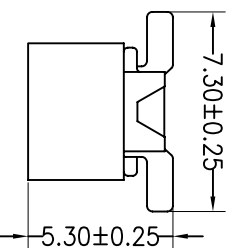
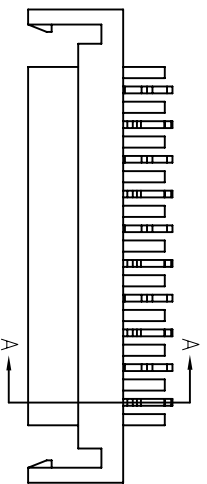
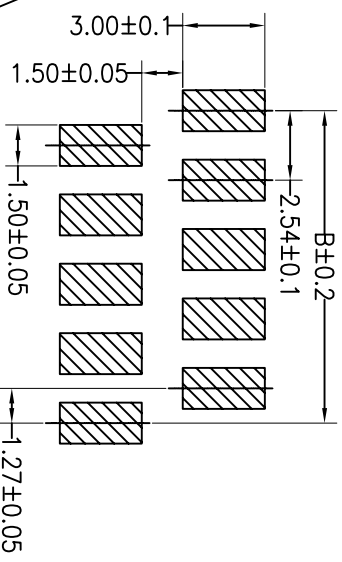
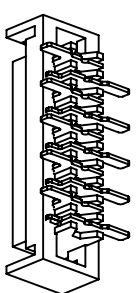
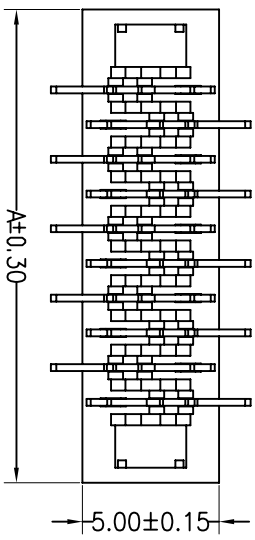


HSE ROHS

Recommended P.C.B Layout(Top Side)
(PCB BOARD TOLERANCE±0.05)

SPECIFICATIONS

Rated Current:1.0AMP
 Contact Resistance:20mΩ Max
 Withstand Voltage:500V AC/DC
 Insulation Resistance:1000MΩ Min
 Operation Temperature:−40°c to +105°c
 Contact Material:Phosphor Bronze
 Contact Plating:Sn Over Ni
 Insulator Material:Polyester(UL94V−0)
 Standard: PA46
 Max.Processing Temp: 230°C for 30−60 seconds
 (260°C for 10 seconds)

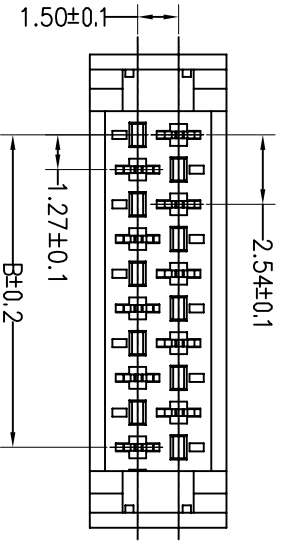


PINS	A	B
4	9.68	3.81
6	12.23	6.35
8	14.77	8.89
10	17.31	11.43
12	19.85	13.97
14	22.39	16.51
16	24.93	19.05
18	27.47	21.59
20	30.01	24.13
24	35.09	29.21
26	37.63	31.75

Ordering Information

4000 XX F M SN X W X 01

No. of Pins 04~26P
 Contact Plating Sn/Sold Flash/Tin
 Insulator Material Option A=BK-PBT D=BK-PA46
 Packing T=Tube R=Reel



No. of Pins	Length (mm)
4	9.68
6	12.23
8	14.77
10	17.31
12	19.85
14	22.39
16	24.93
18	27.47
20	30.01
24	35.09
26	37.63

REV	DATE	MODIFICATION DESCRIPTION	CHANGE	OPERATION		DRAW	SCALE		FIT	PART NO.	TITLE:
				DIM	TOL		UNIT	mm			
1				X.X	±0.30	CHECK			A4	4000XXFMSNWX01	Micro Match FEMALE-SMT TYPE
				X.XX	±0.20						
				X.XXX	±0.10						
				Angle	±3°	APPROVE			1/1		
									PROJ.		

BESTCONN(WUHAN) TECHNOLOGY CO.,LTD
<https://bsconnector.com/>