

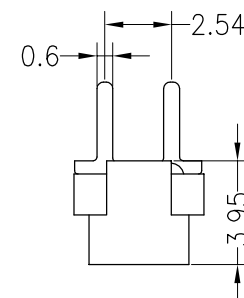
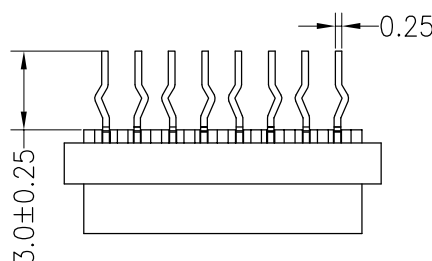
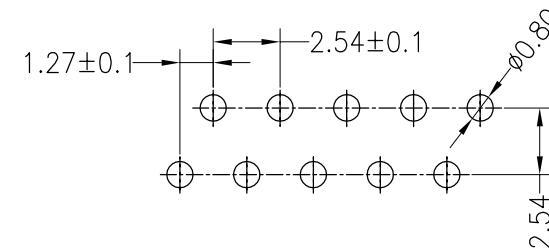
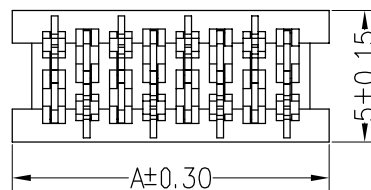
HSF RoHS

SPECIFICATIONS

Rated Current:1.0AMP
 Contact Resistance:20mΩ Max
 Withstand Voltage:500V AC/DC
 Insulation Resistance:1000MΩ Min
 Operation Temperature:-40°C to +105°C

Contact Material:Phosphor Bronze
 Contact Plating:Sn Over Ni
 Insulator Material:Polyester(UL94V-0)
 Standard: PBT
 Max.Processing Temp: 180°C for 30-60 seconds
 (200°C for 10 seconds)

Recommended P.C.B Layout(Top Side)
 (PCB BOARD TOLERANCE±0.05)



PINS	A	B
4	6.98	3.81
6	9.52	6.35
8	12.06	8.89
10	14.60	11.43
12	17.14	13.97
14	19.68	16.51
16	22.22	19.05
18	24.76	21.59
20	27.30	24.13
22	29.84	26.67
24	32.38	29.21
26	34.92	31.75

Ordering Information

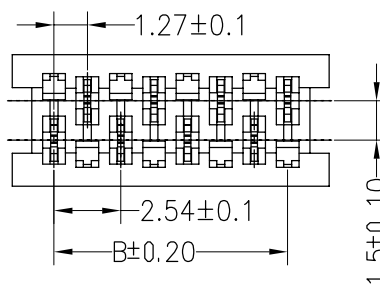
4000 XX F S SN X N X 01

No.of Pins
04~26P

Contact Plating
S0:Gold Flash/Tin
SN:Tin

Insulator Material Option
A=BK-PBT
D=BK-PA46

Packing
T=Tube
R=Reel



		OPERATION		DRAW	BEN	19.04.11	SCALE	FIT	BESTCONN(WUHAN) TECHNOLOGY CO.,LTD	
		X.X	±0.30	CHECK			UNIT	mm	https://bsconnector.com/	
		X.XX	±0.20							
		X.XXX	±0.10	APPROVE			SIZE	A4	PART NO.	4000XXFSSNXNX01
		Angle	±3°							
REV	DATE	MODIFICATION DESCRIPTION		CHANGE			SHEET	1/1	TITLE:	MICRO MATCH FEMALE-DIP TYPE
DIM	TOL						PROJ.			

A

A