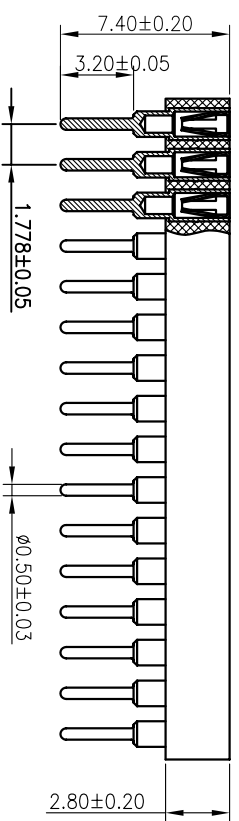
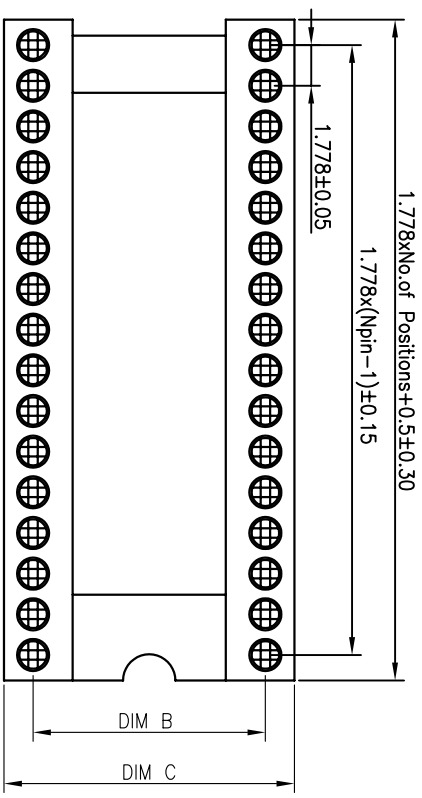


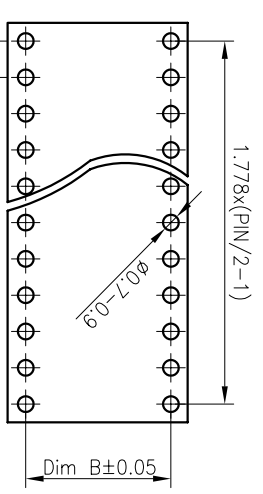
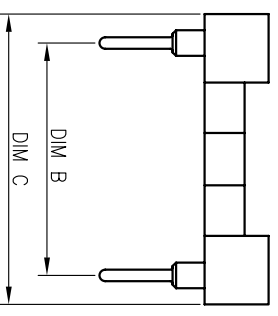
HSE RoHS

Insulator type: Open frame

No. of Positions	B	C
16	7.62	10.16
24	10.16	12.7
28	10.16	12.7
30	10.16	12.7
32	10.16	12.7
48	10.16	12.7
20	15.24	17.64
24	15.24	17.64
28	15.24	17.64
40	15.24	17.64
42	15.24	17.64
48	15.24	17.64
52	15.24	17.64
56	15.24	17.64
64	15.24	17.64
68	15.24	17.64

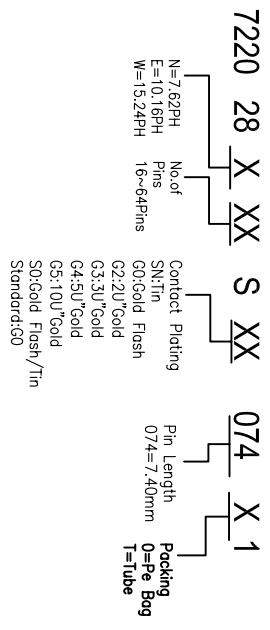


Technical Specs:
 Insulator: Black glass filled polyester PPS
 Flammability: UL 94V-0
 Sleeve: Brass CuZn36Pb3(C36000)
 Contact clip(4 finger): Beryllium copper(C17200)
 Accepted pin: Ø0.40 to 0.56mm
 Forces: (polished steel gauge Ø0.43mm)
 --Insertion 2 N typ
 --Withdrawal 1 N typ
 Mechanical life: min 100 cycles
 Rated current: 1.0AMP
 Contact resistance: max 10mΩ
 Dielectric resistance: Min 1000MΩ
 Operating temperature: -40°C+105°C
 Soldering temperature: 260°C, 10s max



Recommended P.C.B Layout(Top Side)

Ordering Information



REV	DATE	MODIFICATION DESCRIPTION	CHANGE	DIM	TOL	APPROVE	SCALE	FIT	PART NO.	TITLE:
A0	2014.03.28	NEW DRAWING				CHECK	A4	1/1	722028XXXXX074X1	1.778x2.8 Machine Pin IC Socket L=7.40mm
1										

BESTCONN(WUHAN) TECHNOLOGY CO.,LTD
<https://bsconnector.com/>